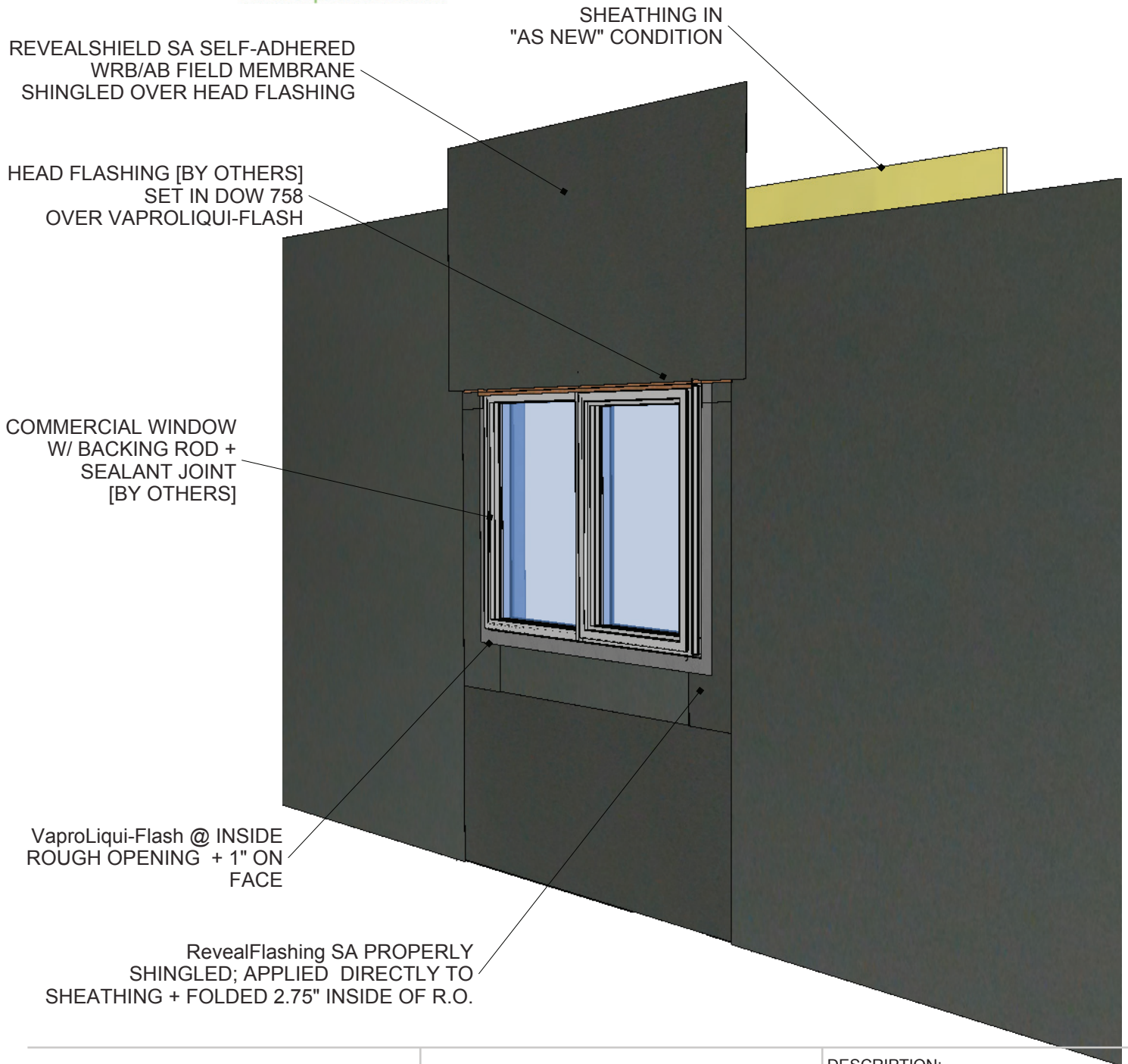


RevealShield SA Wall to Window Interface



REVEALSHIELD SA **SELF-ADHERED**

A Vapor permeable, weather-resistant, air barrier self-adhered membrane for open joint cladding systems, with VaproLiqui-Flash vapor permeable, liquid applied flashing over RevealFlashing SA.
 Note: No primers needed.

DESCRIPTION:

RevealShield SA with VaproLiqui-Flash and RevealFlashing SA (Self-Adhered) helps create a complete open joint AB + WRB open joint membrane system over gypsum, plywood, concrete, etc..

DRAWN BY: AFG DATE: 05.15.2014

Always check www.vaproshield.com for the latest details and installation instructions

